

St Joseph's Catholic Primary School



Live, Love and Learn in a
Caring Christian Community'

Thank you for your kind interest in St Joseph's Catholic Primary School.

We are very proud of our happy and successful school, made possible only with the support of our dedicated team of hardworking staff and wonderful Board of Governors and School Association.

The family of St Joseph's School share together a commitment to our School Mission Statement, that we may all 'Live, love and learn in a caring Christian community'.

St Joseph's School has grown significantly in recent years, expanding from seven to 12 classrooms with the establishment of our outstanding Nursery. We admit children to the Nursery and Reception once a year and are often oversubscribed. However, there is an increasing mobility of families moving to and from the area, which provides opportunities for in-year admissions too.

It is always a great pleasure to welcome prospective parents to our school; you are warmly invited to visit us during the day to enable you to gain an insight into our school.

There is so much to share with you. I do hope you will enjoy reading our prospectus and be encouraged to visit us soon.

With all good wishes

Peter Coldwell
Headteacher

Our School

St Joseph's is a voluntary-aided, all-ability, Roman Catholic school for children aged 4-11 years.

The building is designed with Early Years, Infant and Junior departments consisting of 12 classrooms and various group activity areas. The school has a one and a half form intake, with 45 children per year group.



The school has an outstanding Nursery class which provides the perfect introduction for younger children. At the centre of the school building is a large assembly hall, which is also equipped for Physical Education.

St Joseph's School has strong links to St Joseph's Pre-School as well as to St Mary's Catholic Secondary School. Two playgrounds, a spacious field area and an adventure playground surround the school. Situated on the west side of Bishop's Stortford the school is bordered by our neighbours, St Mary's Catholic Secondary School and the Bishop's Stortford College playing fields.

Our School Ethos

St Joseph's Catholic Primary School is a caring school which values each member of the community. This is encompassed in our School Mission Statement. Expectations of care and concern for the well being of all children, staff and families are central to our ethos.



Our Mission Statement

To Live, Love and Learn in a Caring Christian Community

Our School Mission Statement gives meaning and direction to the daily life of St Joseph's. Our primary aim is to encourage children to know, love and serve God.

We can best achieve this by providing the children with a caring Christian environment advocating the beliefs, values and attitudes in the Catholic traditions.

To Live in a Caring Christian Community

Our school is a community of faith whose life is inspired by God. In living out our Mission Statement we follow the teachings of Jesus and his Church to give meaning and direction to the daily life of St Joseph's.



Our Catholic Faith

We celebrate our beliefs in daily acts of class and school worship in keeping with the liturgical calendar and in the celebration of school Masses, especially marking important events and feast days. We encourage our children to grow in understanding, love and respect for the Sacraments through our Religious Education programme. We have strong links with the parish; our parish priest is a frequent and welcome visitor and a member of the Board of Governors. The children in KS2 attend mass at the church on a termly basis. Our links with St Mary's Catholic School are well established with the majority of year 6 children transferring there each year. Staff from St Mary's visit the school and liaise on matters relating to secondary transfer.

The Chaplaincy Team

The Chaplaincy Team play an important role in enhancing the spiritual life of the school. Their responsibilities include leading acts of worship, raising money for charities and serving the local community. One of their most important roles relating to the prayer life of the school is to create a 'thought for the week' based on the Sunday Gospel, which is shared with all of the children in the school. They liaise regularly with the Chaplaincy Team's staff representative, to discuss ways in which the spiritual life of the school can be further developed.



To Love in a Caring Christian Community

Our love of God and our desire to follow the example and teaching of His Son Jesus is central to our Mission. It encompasses love of oneself, love for others and the understanding of the need for loving behaviour.

Self-esteem

We develop our children's self-esteem by rewarding good behaviour and achievement through recognition at assemblies and in class. We use language which positively encourages individual development and we create a caring environment where children can grow in confidence. Our School Council was set up to enable children to have a say in the running of their school and helps children become more confident when putting forward ideas. School Council representatives from each class are elected by their peers.

House points

The House System involves all pupils and members of staff and is designed to give students a sense of belonging and community as valued members of a small 'family unit' within the larger 'family' of St Joseph's. Furthermore, the House system teaches and rewards the behaviours, skills and qualities that will help students live out the Mission Statement.



To Learn in a Caring Christian Community

Each child is unique and comes with their own gifts of the Holy Spirit. We seek to develop each child's individual talents by nurturing them academically, emotionally, physically, socially and spiritually. The delivery of a wide and thorough curriculum helps inspire and excite enthusiasm to learn and prepares the children for the responsibilities and experiences of life.

Loving others

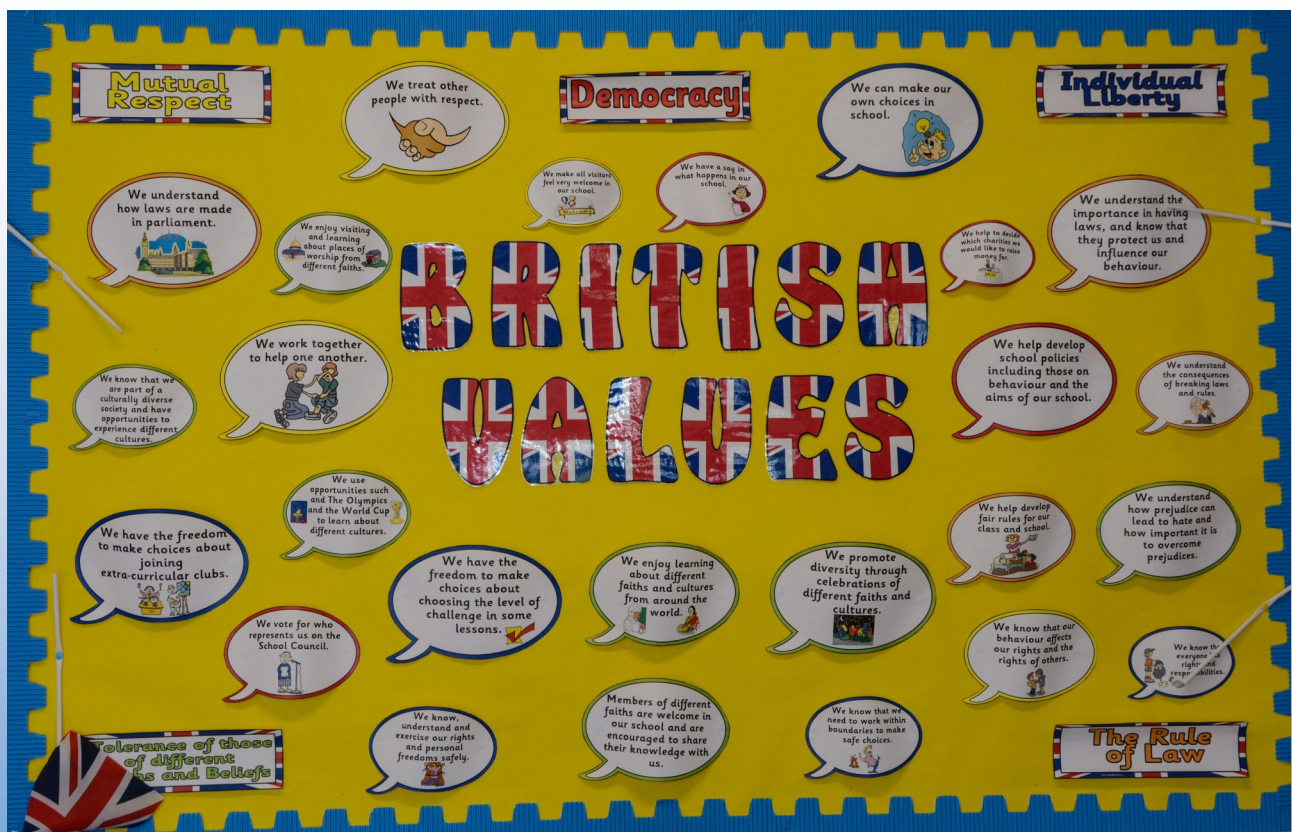
We encourage children to help others, to care for those less fortunate than themselves and to be aware of the problems they face. We teach them to understand and respect different races, cultures and those with social or educational needs. Children live this out in daily school life, older children are given the opportunity to look after younger ones in the school, they are also involved in decision-making about behaviour such as devising Codes of Conduct for classrooms and playgrounds. Representatives from all years are elected to the School Council where they can influence school life.

The School's lively programme of fund-raising initiatives also emphasises the need for children to think of others and help those who are less fortunate.

The programme of Personal, Social and Health Education that we follow helps children to realise that love and acceptable behaviour, in the wider context, are vital to a law-abiding and orderly society.

British Values

The school's values and ethos is one of tolerance and respect. The recognition that all people are to be valued regardless of beliefs, background or ethnic origin is reflected in the school's Equality Statement and rooted in the school's Mission Statement and Aims. Our school actively promotes British values inside and outside of the curriculum.



Admissions Policy

St Joseph's is a Catholic Foundation School intended for the education of Catholic children. When there are spaces in the school we are happy to welcome children of all faiths.



As a Catholic School, we aim to provide a Catholic Education for all our pupils. Catholic doctrine and practice permeate every aspect of the school's activity. It is important therefore that the Catholic character of the school's education is fully understood and appreciated by all families making an application. Demand for places at St Joseph's usually exceeds the number of places available. Offers of places will be made to eligible pupils in accordance with the admission criteria and order of priority.

School Association

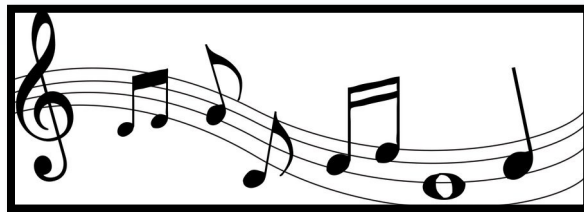
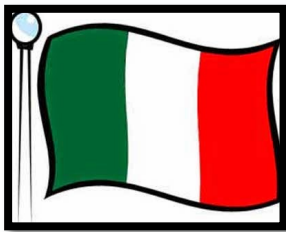
All parents are automatically members of our lively School Association while their children are at the school. It is led by an outstanding committee which organises a variety of functions and events throughout the school year such as a Christmas Shopping Evening, Family Discos and the May Fayre. These events not only provide valuable income for the school but also the opportunity to socialise.



Additional Activities

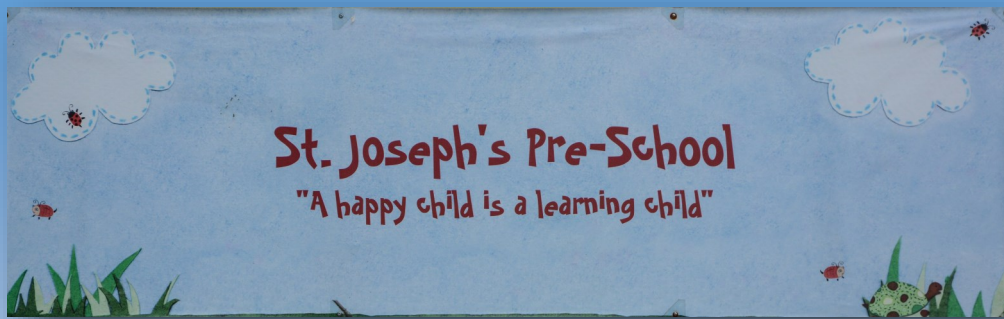
Extra-Curricular Activities

The school offers a variety of extra-curricular activities. At present these include: recorder club; school choir; craft club; netball club; football club; chess club; multi-sports club; rugby club; Italian club and Irish dancing. Children may use the school's library and parents are invited to purchase books from our regular book fairs. In addition, a peripatetic music (violin) teacher visits the school weekly. Drum lessons are also offered to our Key Stage 2 pupils.



Early Bird and Night Owl Clubs

Fun and Learning out of school care for three to eleven's based at St Joseph's School. Children can arrive at the club at 7.30am each morning; they are given a nutritious breakfast and take part in supervised activities before school starts. The Night Owl 'After School' Club begins at 3.45 until 6.30pm.



St Joseph's Pre-School opened in April 1981. We moved to our current premises in 2006. We operate a purpose built, self-contained classroom within the grounds of St Joseph's R.C. School.

At the Pre-School, children have access to a spacious outdoor area and playful garden. Here, children are encouraged to learn through play, gaining an understanding of social behaviours and respect for others through fun based activities. These areas and the classroom are easily accessible via steps and a ramp.

A maximum of 26 children may attend a session where we offer 2 and 3 year olds Herts County Council (HCC) funding. The Pre-School is registered on the Early Years Register. We are open 5 days a week and offer full flexi-care for our families.

We fully support children with special educational needs and welcome those with English as an additional language. As per our fully inclusive admissions policy, we welcome families from all cultural backgrounds.

Everything we do is permeated by the values that shape the school, including fostering a healthy respect for others in accordance with our mission statement. This is to live, love and learn in a caring, Christian community.



School Uniform

Wearing school uniform gives the children a sense of belonging and an identity within the school. The School Policy is to encourage the children to take pride in their appearance and wear the correct uniform at all times. A full uniform list and the Uniform Policy can be found on the website.



Travel Plan

St Joseph's school is committed to ensuring that everyone travelling to and from the school can do so as safely as possible. In order to achieve this we have developed a Travel Plan - a full copy of which can be found on the School's Website. The Travel Plan is presented to and reviewed by the Governors annually.

In accordance with the Travel Plan, we encourage those travelling to the site to use environmentally friendly modes of transport and to be aware of the needs of those living in the immediate vicinity of the school.

We believe this contributes to the health, safety and developing independence of pupils and good relationships with our neighbours. This supports our school's mission statement, "To live, love and learn in a caring Christian community"



Eco Plan

St. Joseph's school is committed to ensuring that the School will become a more stimulating place in which to learn, whilst reducing the environmental impact of the School on the community in accordance with our Eco Plan.

The main goal for the School's Eco Plan is promoting environmentally responsible consumption of goods and services by the School and school community given the limitations of the age and construction of the school buildings and budget constraints.

The School's Eco Plan covers a number of topics including: Eco Plan in the curriculum, Green Procurement Policy, Carbon Reduction Plan, Eco Initiatives and Eco Action Plan