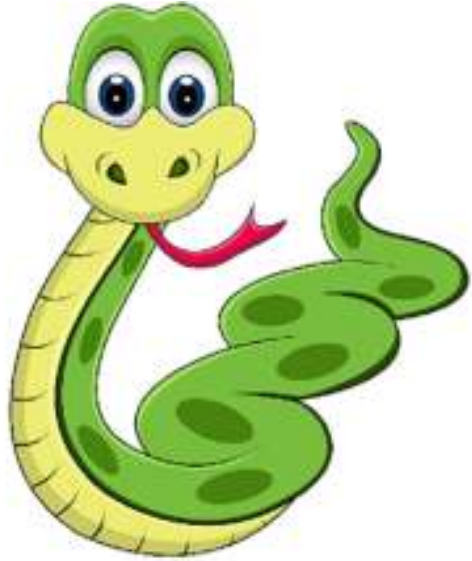


Phonics

Odd one out

On the next few pages you will see some pictures beginning with one of our sounds. One of the pictures is in the wrong place! Can you spot which one?



Ss



Sainsbury's



Aa

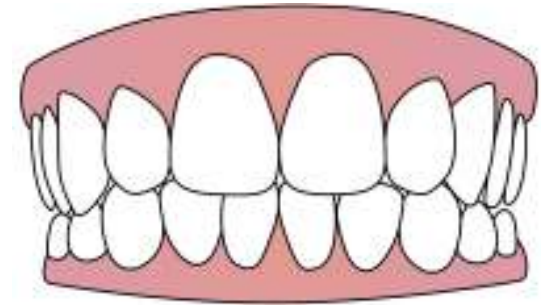


10

TESCO



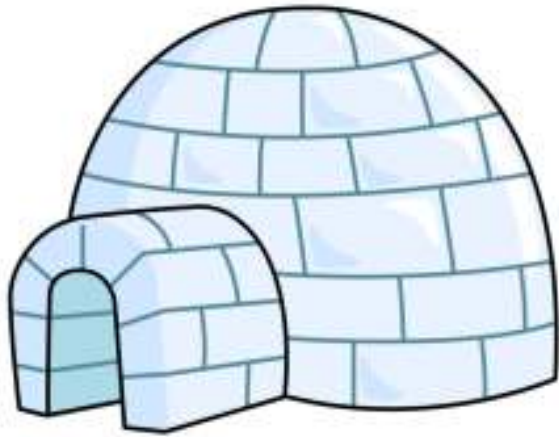
Tt





Pp

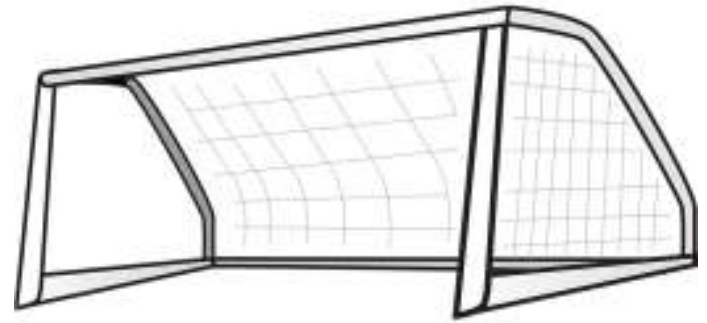




i



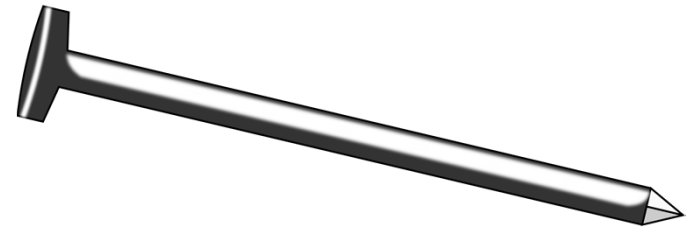
INDIA



Nn



9



Extra challenge

As an extra challenge we'd like you to have a try at writing the different letters...